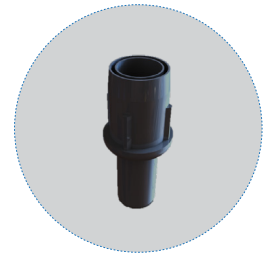


Adjustable Shelves



Adjustable Bullet Feet

## STANDARD FEATURES

### DESIGN

- Cabinet design is well-engineered to meet functionality, and to fulfill operational aspects and user expectations.
- Efficient refrigeration system to provide user colder products temperature with lower operational cos.

### REFRIGERATION SYSTEM

- Corrosion-proof hot gas condensate evaporation.
- More organized and less exposed wires.
- Compact refrigeration system with wheels for easy dragging and maintenance access.
- Large evaporator fan blades to give lower velocity and high-volume airflow.

### CABINET CONSTRUCTION

- Two (2) exterior finish choices – Stainless steel and black coated galvanized iron.
- Side, top and front double glass for great product visibility.
- Glass shelves supports product visibility.
- Openable front glass with hinge mechanism for easy cleaning.
- Self-closing glass door at the back.
- Glass with panorama borders for better design integration.
- Cabinet base structure is foamed-in-place using a high density polyurethane insulation.
- Heavy duty and welded structure prior coating for corrosion protection.

### SHELVING

- Three (3) adjustable shelves with plenty of space.
- Shelf support brackets made of aluminum; shelves are adjustable free of increments.

### COLORS

- Available in two colors, black & stainless steel.
- If you want to get different colors, please contact our sales representative.

### LIGHTING

- Integrated magnetic LED lights – 4 hidden lights.

### MODEL FEATURES

- Two (2) colors / finishes: Stainless steel and black.
- Ambient version is available.
- Effortless usage for staff.
- Adjustable bullet feet with range of 50mm.
- Adjustable shelves free of increments.
- Interior and refrigeration system are isolated with insulated base.
- Stable temperature levels to realize products' needs.

### SPECIAL FEATURES

- LED lights are used which is long lasting and energy-efficient.
- Optimized honeycomb is used to get better air circulation through the cabinet.
- A double-glazed glass system to reduce heat transfer from outer atmosphere to products inside the cabinet.

### ELECTRICAL

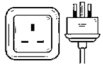
- Unit is completely pre-wired at factory and ready to connect to a 240/50-60/1 phase, 13 amp dedicated outlet.

## WARRANTY

Two years warranty on all parts

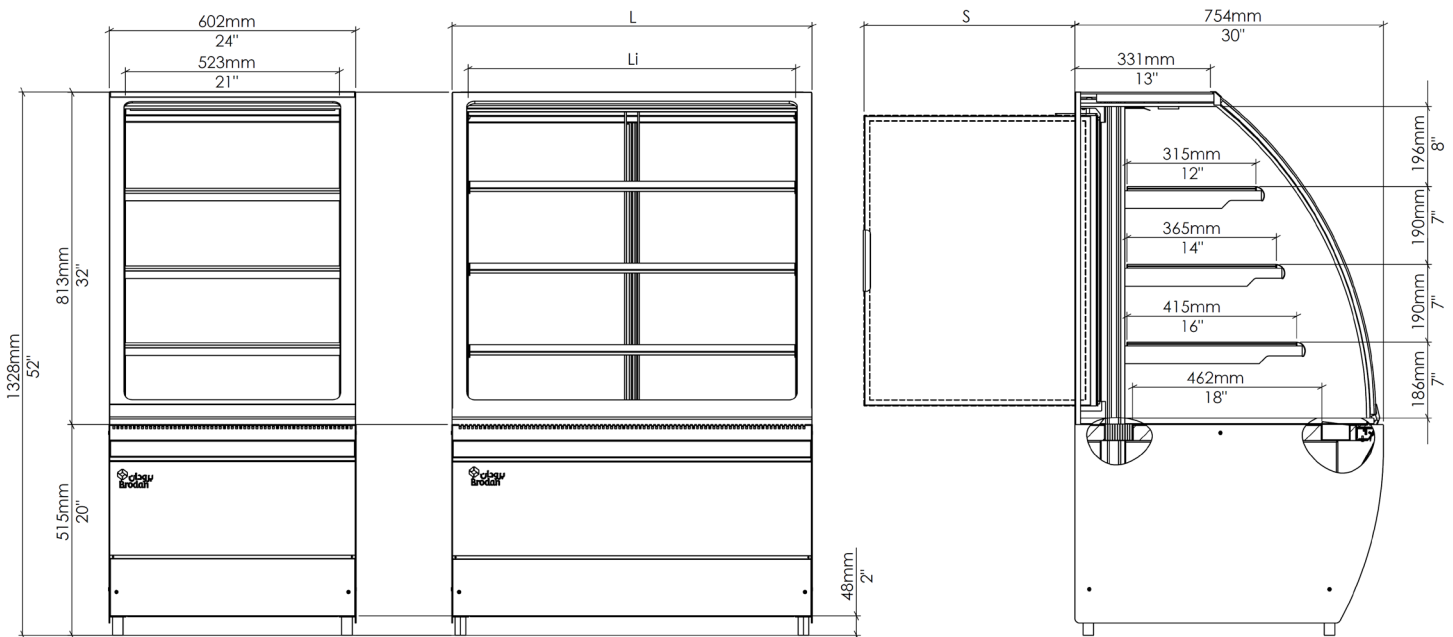
## DATA\*

Cabinet Model	Internal Volume (m <sup>3</sup> )	External Cabinet Dimensions (mm)			Internal Cabinet Dimensions (mm)			Shelves and base width (mm)	Shelves depth (mm)			Base depth (mm)	Door swing (mm) S	Number of doors	Weight (kg)
		L	D	H**	L <sub>i</sub>	D <sub>i</sub>	H <sub>i</sub>		Top	Mid	Low				
600	0.25	605	755	1330	565	680	800	561	315	365	415	462	515	1	~155
900	0.38	900			845			839					410	2	~175
1500	0.63	1500			1462			1457					715	2	~255

Cabinet Model	Horse Power (HP)	Amps	Refrigerant Charge (g)	Refrigerant Type	Temperature Range (°C)	Voltage/Hertz/Phase	Plug type
600	1/4	2.8	230	R404A	+2 to +6	230V/50-60Hz/1Ph	 Type G
900	3/8	4.1	~400				
1500	3/8	4.4	~500				

\*BRODAN reserves the right to make changes at any moment and without prior notice.  
 \*\*Height can be adjusted -10 / +40mm

## PLAN VIEW



600 Front Elevation

900 & 1500 Front Elevation

Side Elevation

## ORDERING

Cabinet Model	Color Version	
	Black	Stainless Steel
600	SOUDA-RDC-600-BLK	SOUDA-RDC-600-SS
900	SOUDA-RDC-900-BLK	SOUDA-RDC-900-SS
1500	SOUDA-RDC-1500-BLK	SOUDA-RDC-1500-SS